

DAMN^o 44

MAY / JUNE 2014

A MAGAZINE ON CONTEMPORARY CULTURE

IMAGE: ONE YEAR LATER

Milan Novelties
+ focus on outdoor furniture





Young, fresh, and wild

If you want to see new ideas, the Milan fair is just the place. With Salone Satellite (Rho Fiera), Ventura Lambrate, and many exhibitions throughout the city, the grounds are fertile for talent spotting.

FONDUE SLIPPER (1) / *Satsuki Ohata*

This new footwear concept perfectly fits all feet. The production process is similar to cheese fondue, as it involves 'dipping' your own foot into the slimy material. After further development of the product, it will be possible to make this slipper at home... And it will be wearable outside as well as inside the house!

satsuki.co

THE PHYTOPHILER FLOWER POT SYSTEM (2) /

Livia Rossi and Gianluca Giabardo

A project dedicated to plant lovers and their efforts to communicate and interact - by way of functional appendices - with those sentient beings so different from them. Scientific evidence shows that the presence of plants in our domestic and work spaces is important for our well-being. And it's with those potted plants being close to us in our daily routines, that we develop a truly sympathetic relationship. They can morph from the status of mere decorative elements to special, living, feeling, housemates. Through this exchange, we humans come to notice the micromovements of the plants and to sense their needs, eventually attributing to each of them a specific personality.

dossofiarito.com

WASTELAND (3) / *Sindre Bjerkli*

In utilising waste paper from a local paper factory, the designer's aim was to question our resources and how we preserve them. By gluing waste paper into stacks, she ended up with a material that revealed some sort of topography. The process involved not knowing, and thereby accepting of the uncertainties of the outcome.

un-desirables.com

BAMBOO FOREST (4) / *Poetic Lab*

Bamboo furniture is typically shaped from a very craft-related perspective, with its beauty emanating from the skill involved. These designers perceive a particular kind of beauty from bamboo in its original form - the bamboo forests, a combination of elegant shapes and gentle movements, a somehow random yet pure beauty, almost as if you can hear the wind whispering among the trees. They thus decided to use bamboo with a minimum touch, retaining the aesthetic of the raw material.

poetic-lab.com





2



3



4



LINESCAPES (1) / *Guglielmo Poletti*

A collection of objects marked by minimum traits and formal lightness. The aim here is to link aesthetics and function through a poetic gesture, an element of surprise that gently addresses the emotional sphere. Looking for experimentation, Poletti attended a Vitra workshop at Domaine de Boisbuchet, choosing Ron Gilad as his tutor. This opened up a new perspective, relating the philosophical and the psychoanalytical. By focusing on the senses instead of rationality, design becomes the instrument with which to speak to the emotions through an inner, intimate voice, generating a strongly conceptual approach.

guglielmopoletti.com

KEYSTONES (2) / *Studio Minale-Maeda*

Reducing the design of a piece of furniture to a single connector – a compact piece that can be 3D-printed on location – the keystone holds together the various components, which need minimal fabrication using basic tools or proprietary materials like those found in a home improvement store, without the need for joinery skills. Only the most essential part of the furniture needs to be shipped, the rest can be made from the materials at hand.

minale-maeda.com

ALL WOOD STOOL & SHELF SYSTEM 96° (3/4) / *Karoline Fesser*

Breaking away from typical shelving arrangements, the height of this shelf system is not determined by a static frame but by the number of compartments. Each of the basic elements – base, box, and cover – follows an angle of 96°. With the stool, the wooden seat and base are flipped on the horizontal axis, the spindle winding into a threaded cylinder. All components are turned and can be processed by hand or with a CNC lathe.

Photos: Sven Lützenkirchen

karolinefesser.de

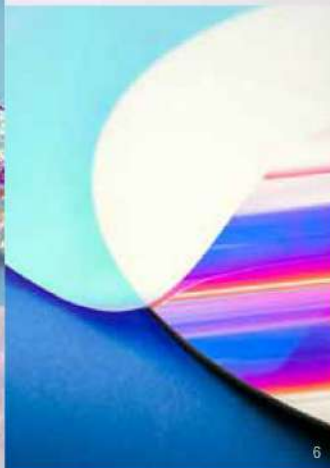
ONE YEAR LATER (5/6/7) / *Joséphine Choquet and Virgile Thévoz*

A range of accessories and household objects to celebrate their one-year collaboration, following graduation from the ECAL Master of Advanced Studies in Design for Luxury and Craftsmanship. Lun's (5) explores the different stages of craftsmanship involved in the process of making sunglasses. This collection aims to experiment with different shapes and material combinations, in collaboration with local Swiss producers. Bubble mirror (6) is inspired by a bubble's surface. This range of three mirrors plays with the colours of the prism, which change according to your viewing position.

josephinechoquet.ch, virgilethevoz.ch



5



6



7